



# The **Luminia SC156** Lift and Slide Door

[aluk.co.uk](http://aluk.co.uk)

Experts in Aluminium

**ALUK**<sup>®</sup>



## Slide aside, ordinary

The Luminia SC156 Lift and Slide Door has been designed with performance front of mind.

Boasting exceptional water tightness of 1500Pa and ever-impressive U-values of 1.4 W/m<sup>2</sup>K, 1.7 W/m<sup>2</sup>K for double-glazed units and the option to decrease up to 1.0 W/m<sup>2</sup>K with triple glazing, the Luminia SC156 offers the highest levels of thermal and acoustic performance.

Its stunningly slim central interlock option of just 50mm combined with a wide range of configurations will satisfy every architectural requirement.

Like all AluK aluminium sliding door systems, the Luminia SC156 continues to push the industry forward by delivering contemporary aesthetics harmoniously fused with unrivalled innovation.

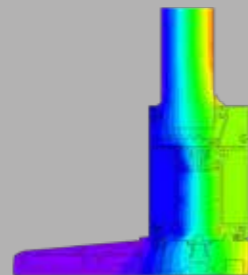
The extraordinary Luminia SC156 is available exclusively through our Luminia Select Partner Network.



## Extraordinary performance

The Luminia SC156 Lift and Slide Door is expertly designed to enhance views and flood homes with natural light, providing even greater comfort.

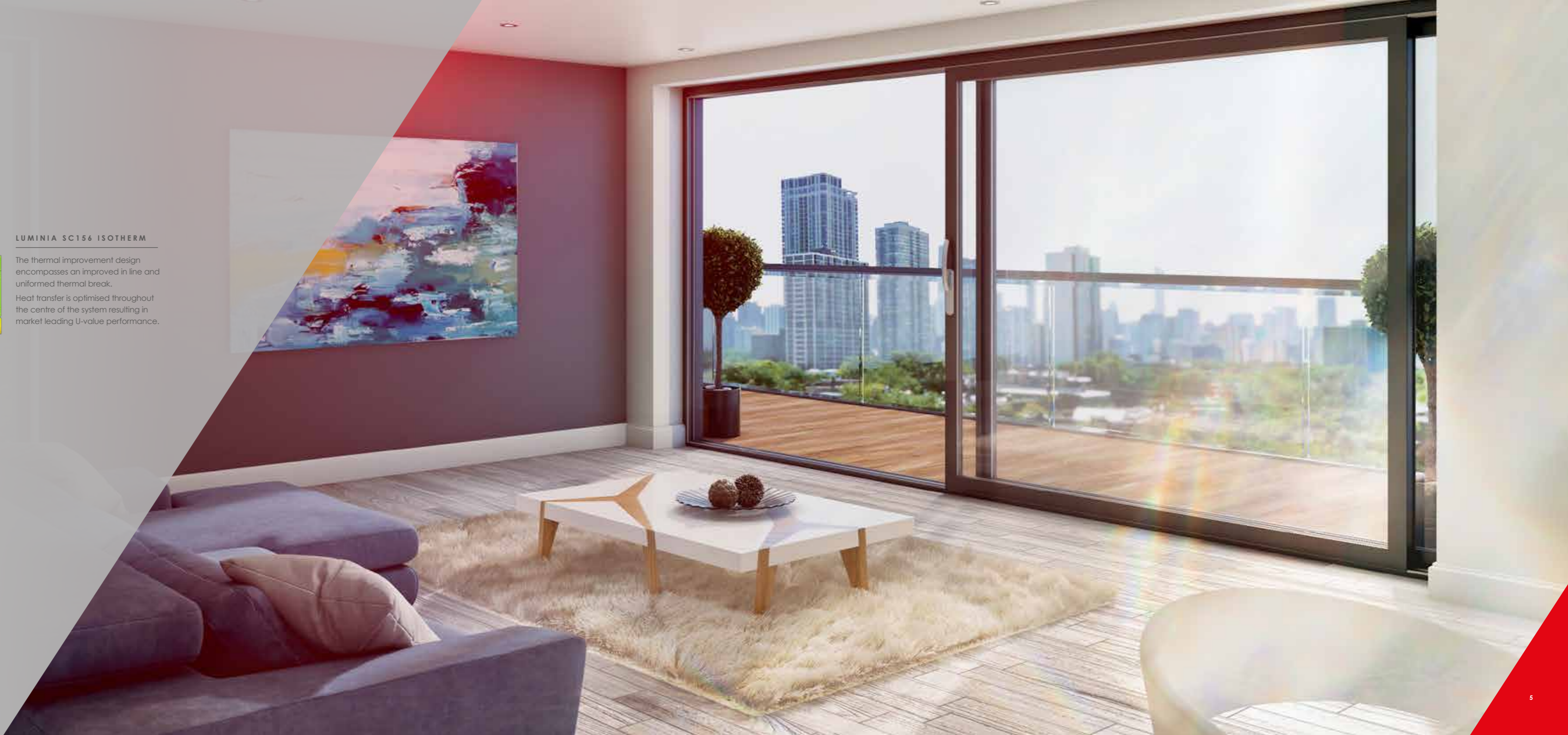
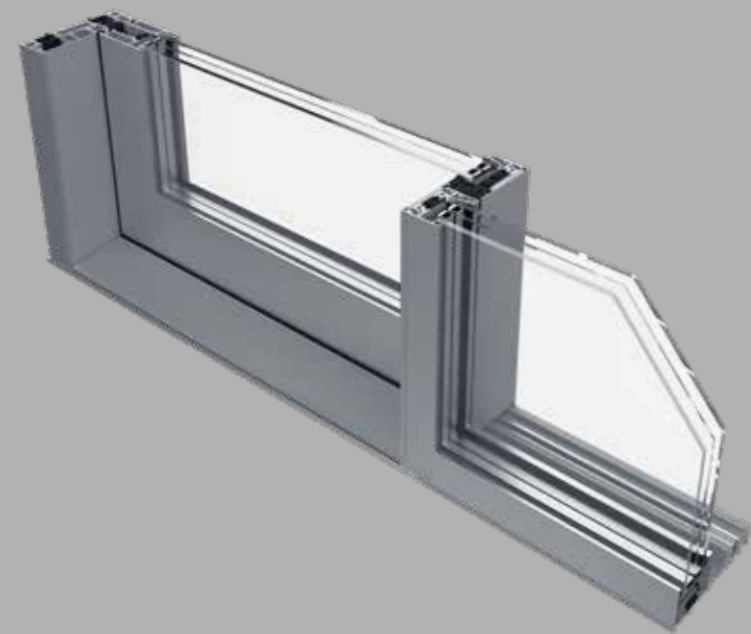
The system's high level of thermal and acoustic insulation along with its wide range of configurations and market-leading weather resistance make it fit for every purpose, including exposed coastal areas.



### LUMINIA SC156 ISOTHERM

The thermal improvement design encompasses an improved in line and uniformed thermal break.

Heat transfer is optimised throughout the centre of the system resulting in market leading U-value performance.



# Clear choice

As Experts in Aluminium, we know our doors inside-out. And from its exceptional U-values and unrivalled thermal performance to wide-ranging configurations and detailed specifications, the Luminia SC156 is every bit the perfect lift and slide system.

PERFORMANCE AND ACCREDITATION	SC156	SC156SLIM
U-value (Double Glazing)* (Ug = 1.0W/m²K) (Mono Rail)	1.4 W/m²K	1.4 W/m²K
U-value (Triple Glazing)* (Ug = 0.6W/m²K) (Mono Rail)	1.0 W/m²K	1.0 W/m²K
U-value (Double Glazing)* (Ug = 1.0W/m²K) (Dual Rail)	1.5 W/m²K	1.6 W/m²K
U-value (Triple Glazing)* (Ug = 0.6W/m²K) (Dual Rail)	1.2 W/m²K	1.3 W/m²K
Acoustic Performance (dB)	Rw(Ct;Ctr) = 44 (-2;-6) dB	Rw(Ct;Ctr) = 44 (-2;-6) dB
Air Tightness (Pa)**	Class 4 (600 Pa)	Class 4 (600 Pa)
Water Tightness (Pa)**	Class E1500 (1500Pa)	Class E1500 (1500Pa)
Wind load (Pa)**	C4 (1600 Pa)	C4 (1600 Pa)
Security	PAS 24	PAS 24
CONFIGURATION & FRAME		
Opening	Lift & slide	Lift & slide
Mono rail (156mm)	✓	✓
Dual rail (156mm)	✓	✓
SIZE LIMITS		
Max vent weight***	400kg	400kg
Max frame height****	3100mm	3100mm
SYSTEM FEATURES		
Sightlines	95mm	50mm
Dual Colour Option	✓	✓
Multi-point locking	✓	✓
Glazing options	Internal	Internal
Glazing thickness	24mm – 50mm	24mm – 50mm
Threshold	23mm	23mm



# Visibly different

The Luminia SC156, where contemporary and minimalist design meet maximised performance and natural light.

Available in multiple sliding configurations and with both mono or dual rail options, the comprehensive range of colours, finishes, optional hardware and PAS 24-accredited security features means that the choice really is yours.

## DESIGN FEATURES

- PAS 24 Accredited
- Exceptional AWW ratings
- Low threshold of 23mm
- Max 400kg panel weight

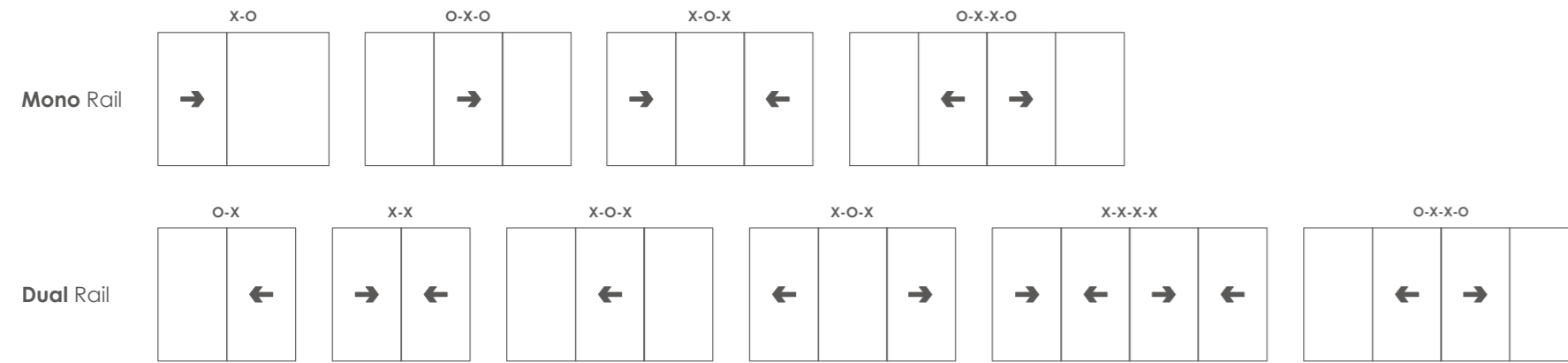
## OPTIONS

- Slimmer sightline of 50mm available
- Accepts 24mm – 50mm double or triple glazing
- Multiple sliding configurations
- Mono or Dual rail options
- Range of hardware and security features
- Available in a range of single and dual colours and anodised finishes

# Beautifully organised

As with all AluK aluminium systems, you'll find an extensive choice of configurations available.

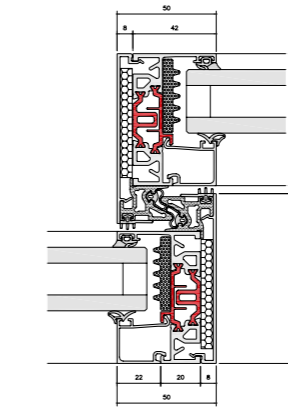
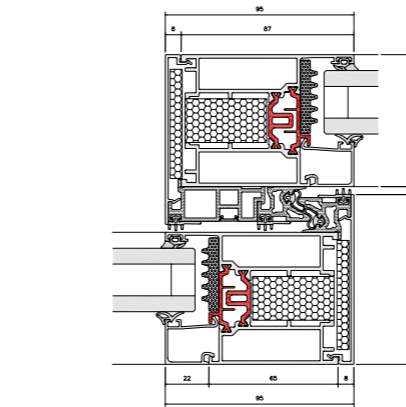
## TYPICAL CONFIGURATIONS



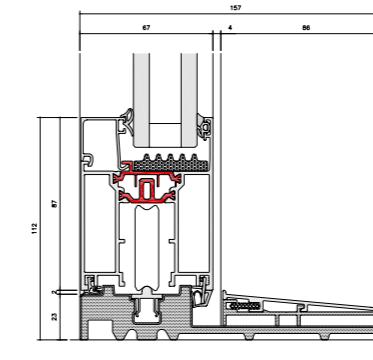
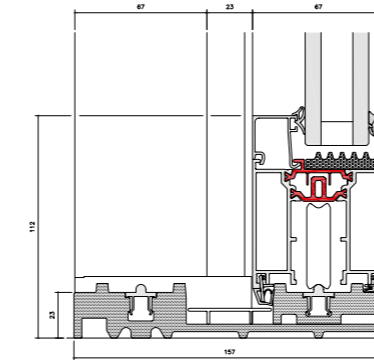
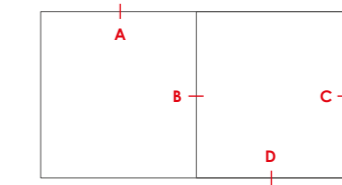
## KEY



# CAD Cross Sections



## CROSS SECTION ELEVATION



\*U-values based on CEN size door (2500mm x 2180mm). \*\*All weather test data taken from BS EN 6375-1 based upon highest performing door configuration. \*\*\*Based on using heavy duty accessories. \*\*\*\*Dependent on wind load and lock variation.  
 Note: npd = No performance declared, image used for illustration purpose only Please visit [www.aluk.co.uk](http://www.aluk.co.uk) to download all BIM components and CAD files.



## Colourful choices

If there's one thing that architects, specifiers and homeowners all have in common, it's their desire for choice. That's why we offer an extensive range of colours and finishes to bring any and every project's vibrancy to life.

The range offers customers the freedom to let their imagination fly, whilst providing installers with the quick turnaround time and clear delivery schedules they demand.

So whether it's a standard single or dual colour or one of the many RAL colours available, AluK really sets the tone for service excellence.

### STANDARD COLOURS

Hipca White 9910HG	Anthracite Grey 7016M
Chocolate Brown 8017M	Deep Black 9005M

### STANDARD DUAL COLOURS

External Anthracite Grey 7016M	External Deep Black 9005M
Internal Hipca WhiteHG 9910HG	Internal Hipca WhiteHG 9910HG

### POPULAR RAL COLOURS

1013M	1015M	7044M	9001M
7034M	1019M	6021M	7032M
3005M	9010M	6003M	7021M

### CUSTOM RAL COLOURS AVAILABLE



T: 01291 639 739  
E: info.uk@aluk.com

Registered Office:  
AluK (GB) Ltd  
Newhouse Farm Ind Est  
Chepstow  
NP16 6UD

Registered Number:  
02881320

[aluk.co.uk](http://aluk.co.uk)

Experts in Aluminium

